

MUZDALIFAH

A Guide for Pilgrims



وزارة الحج والعمرة
MINISTRY OF HAJJ AND UMRAH



Strategic partner

أوقاف
الهيئة العامة للأوقاف
GENERAL AUTHORITY FOR AWQAF



This guide is available in the following languages. Click on your preferred language to download it:

English

ENG

عربي

AR

বাংলা

BEN

Bahasa Indonesia

IND

Français

FRA

Hausa

HAU

Türkçe

TUR

اُردُو

URD

Español

SPN

Русский язык

RUS

Bahasa Malaysia

MAY

සිංහල භාෂාව

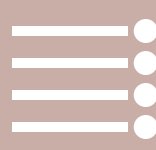
SIN

አማርኛ

AMH

فارسی

PER

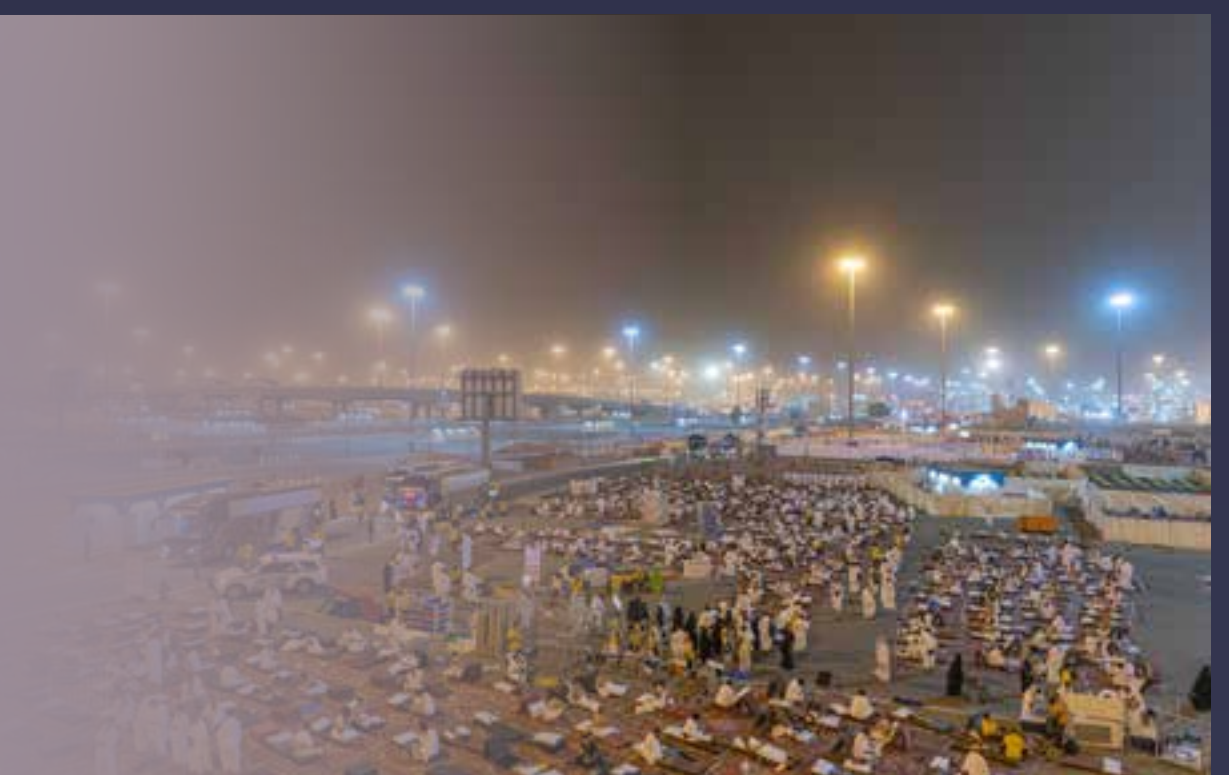




Click on any title to get to the desired page



► Muzdalifah



► The location of Muzdalifah



► What do I do in Muzdalifah?



- ▶ **Al-Mash'ar
Al-Haraam Mosque**



- ▶ **Eating and street vendors**



- ▶ **Protecting yourself
against cold and flu**



- ▶ **The duration of the
stay in Muzdalifah**



- ▶ **Picking up pebbles
for stoning the
Jamaraat**



- ▶ **A description of the
pebbles used for
throwing**



▶ How do I know
my location in
Muzdalifah?



▶ Toilets



Important
numbers



In this guide, you will find the most important information, instructions, and advices related to Muzdalifah which you need to know for your Hajj trip.



Muzdalifah

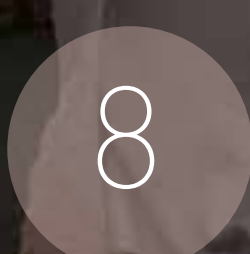
After experiencing the great moments during the Day of 'Arafah you will now move to the third leg of your journey of faith, which is to **Muzdalifah**. Allah the Exalted said: ***“But, when ye press on in the multitude from ‘Arafat, remember Allah by the sacred monument.”***



It was named Muzdalifah for one of the following two reasons:

Because people approach (*yazdalifoonā*) from here, meaning: they are approaching al-Haram (the Sanctuary).

Because people spend nearly all of the night (*zulfan min al-layl*) in it, which means: moments and hours of the night.



Other names:

It is called “**Jam**”, because the people gather there (from the Arabic root ja-ma-’a, meaning: to gather).

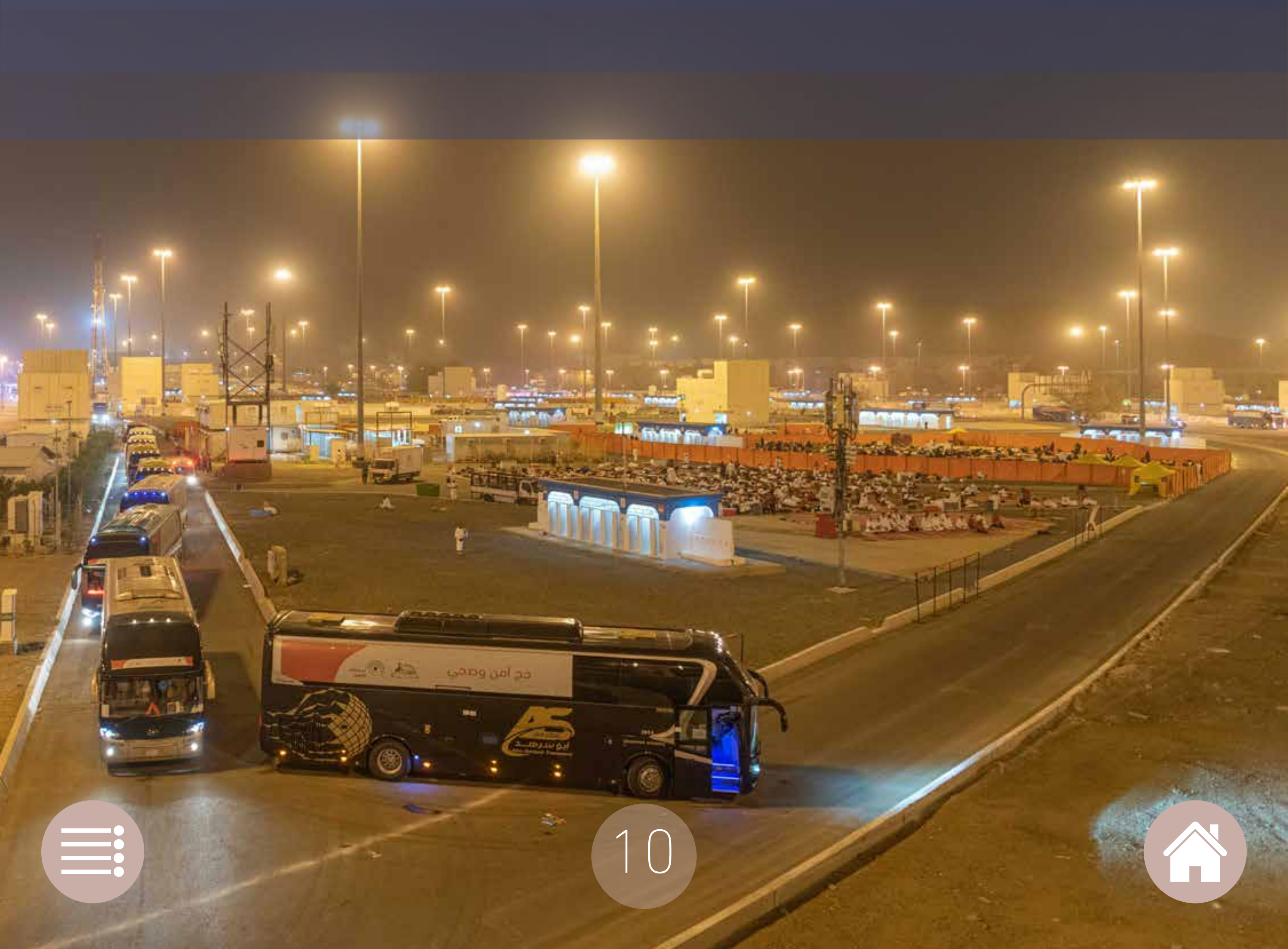
It is also referred to as **Al-Mash’ar Al-Haraam** (the Sacred Monument) because it belongs to the Sanctuary, as mentioned in the Qur’an.



The location of Muzdalifah

Muzdalifah is located between the Hajj stations of Mina and 'Arafaat.

It has an area of **9,630 square metres**
(103,656 Sq.Ft.)





What do I do in Muzdalifah?

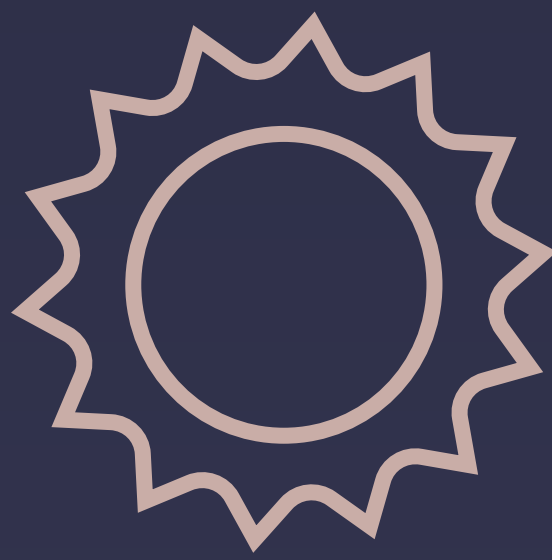
Hajj groups differ in preparing a place for Muzdalifah, but most of them provide carpets, bedding and snacks, and use public toilets.

The moment you arrive you must combine and shorten Maghrib and 'Ishaa, with your group.





Make sure you rest and sleep as much as you can during your stay in Muzdalifah in preparation for the day of Eid.



The weather in Muzdalifah in recent years tends to be hot, so a woman should choose a covering dress which is not too thick.



Make sure to carry your usual medication and to take it during this night.

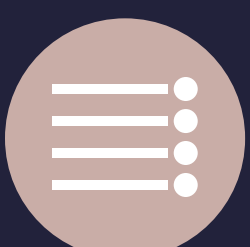




While awake, strive to remain in remembrance of Allah, praise Him, and recite the Talbiyah.



Feel the extent of Allah’s blessings upon you; that He guided you, made the Hajj easy for you, made you reach ‘Arafah, and granted you success by enabling you to supplicate to Him. As Allah the Exalted said: *“...remember Allah by the sacred monument. Remember Him as He hath guided you, although before ye were of those astray.”*



Al-Mash'ar

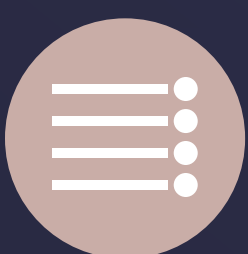
Al-Haraam Mosque



This is a mosque erected in the place where the Messenger of Allah ﷺ stayed in Muzdalifah during the Farewell Pilgrimage.



It is located in Muzdalifah, between the fourth pedestrian road and King Faisal Road.



It is located approximately in the middle between the Nimrah Mosque and the Al-Khayf Mosque.

It is **5 km** (3.1 miles) away from Al-Khayf Mosque and **7 km** (4.3 miles) away from the Nimrah Mosque.



Al-Khayf Mosque



5 km



Al-Mash'ar
Al-Haraam Mosque



7 km



Nimrah Mosque



The Kingdom maintained it and rebuilt it.

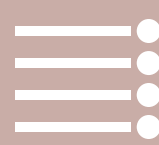
It is 90 metres (98 yards) long and 56 metres (61 yards) wide.



Today, it accommodates more than 12,000 worshippers.



It has two minarets, each 32 metres (105 feet) high.

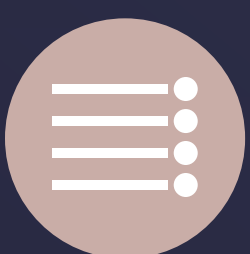




Eating and street vendors



Some street vendors may sell food and drinks, but you are advised not to eat anything from them and to limit yourself to the food and drink which your group provides, paying close attention to the following:





Avoid eating any food cooked by street vendors, and remember that keeping cooked food at room temperature for more than two hours leads to the proliferation of germs and the possibility of food poisoning.



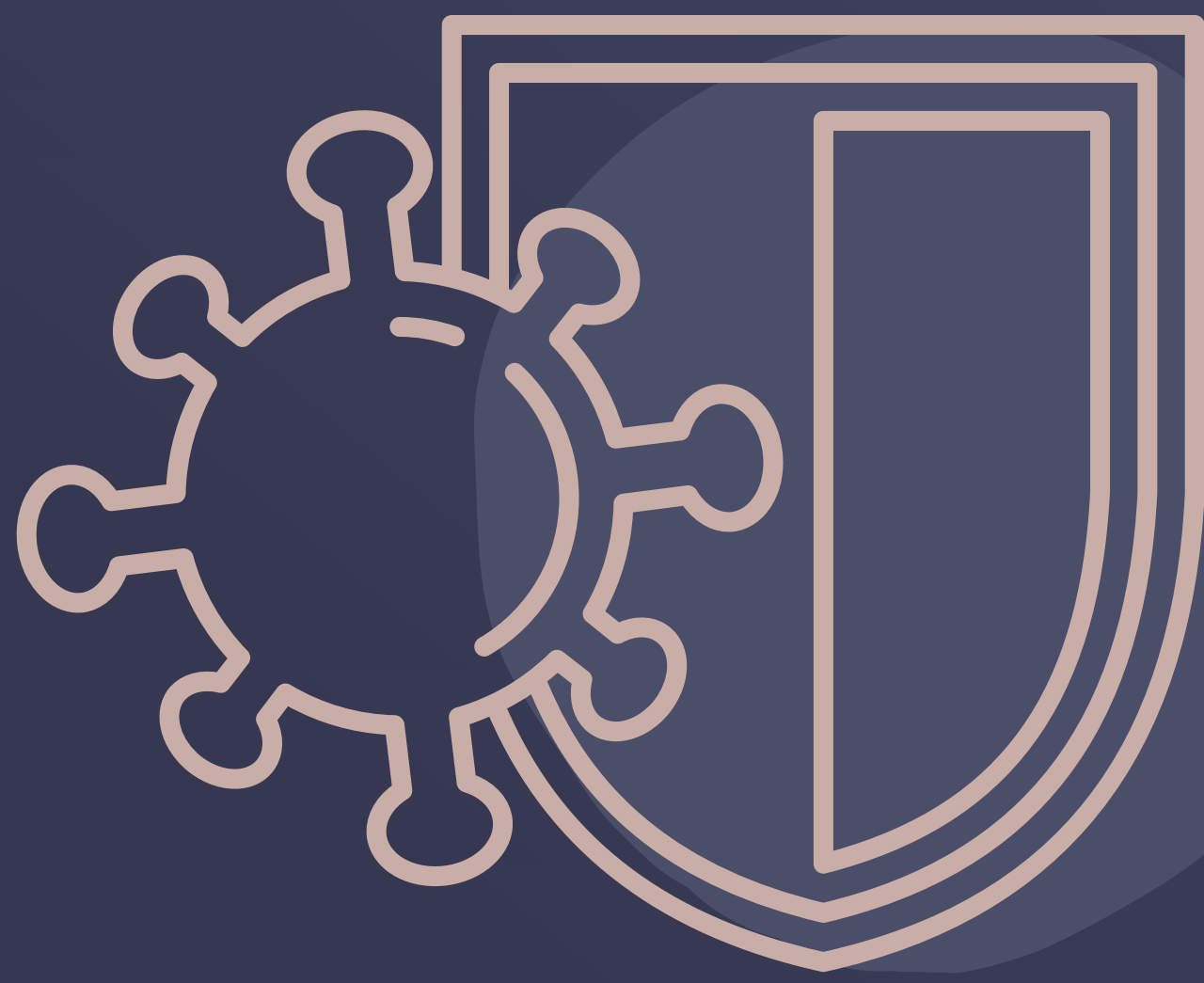
Make sure to wash fruits and vegetables thoroughly before eating them.



Beware of drinking very cold drinks.

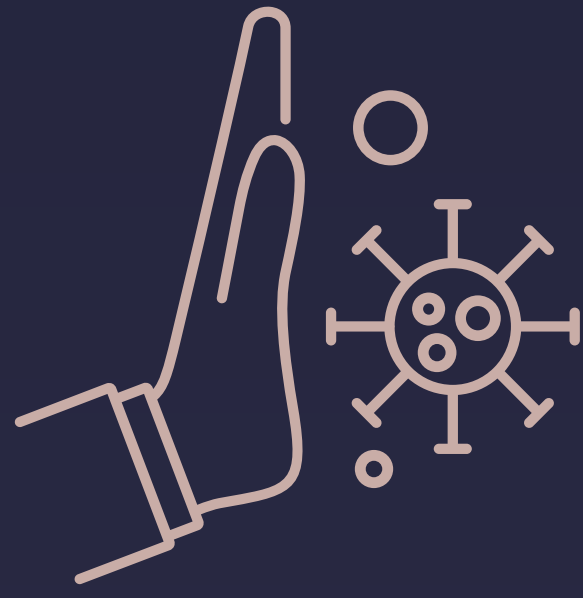


Protect yourself against cold and flu



Some respiratory diseases begin to spread during the last days of Hajj, and we advise you to prevent them by:





Avoiding contact with infected people, and avoid using the patient's utensils and personal items.



Pay attention to the hygiene of the hands, avoiding contact with the eyes and nose, taking care to avoid crowding as much as possible, and wearing a face mask at all times.





Avoid drinking very cold water.



When you arrive at the camp, stay away from the direct air of the air conditioners, especially when the body is sweating, as the extreme variation in body temperature affects your health.

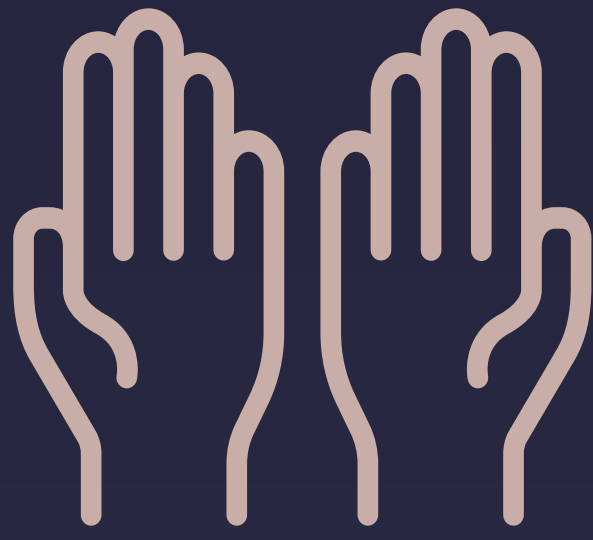
The duration of the stay in Muzdalifah



The time for standing in Muzdalifah begins after sunset on the day of 'Arafah (9 Dhul-Hijjah).



The Madhhabs (schools of jurisprudence) have a difference of opinion about the amount of time one should stay in Muzdalifah. Some say that it is sufficient to pass through and have a short break, while others say it is necessary to stay until midnight, to spend two-thirds of the night there, or until dawn.



The Messenger of Allah ﷺ remained in Muzdalifah until he prayed the dawn (Fajr) prayer. Then he supplicated to his Lord, after which he went to Mina.





The Messenger of Allah ﷺ also gave permission for the women and those accompanying them to leave Muzdalifah before dawn, and among them was Ibn ‘Abbaas .



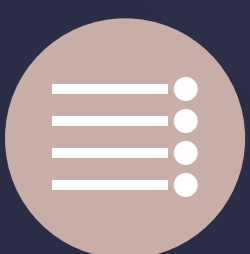
The pilgrim should abide by the time of his group in moving from Muzdalifah, because there is room for leniency in this matter, and the Messenger of Allah ﷺ permitted those Companions who sought permission, particularly if there are women and elderly people in each group.



Picking up pebbles for stoning the Jamaraat

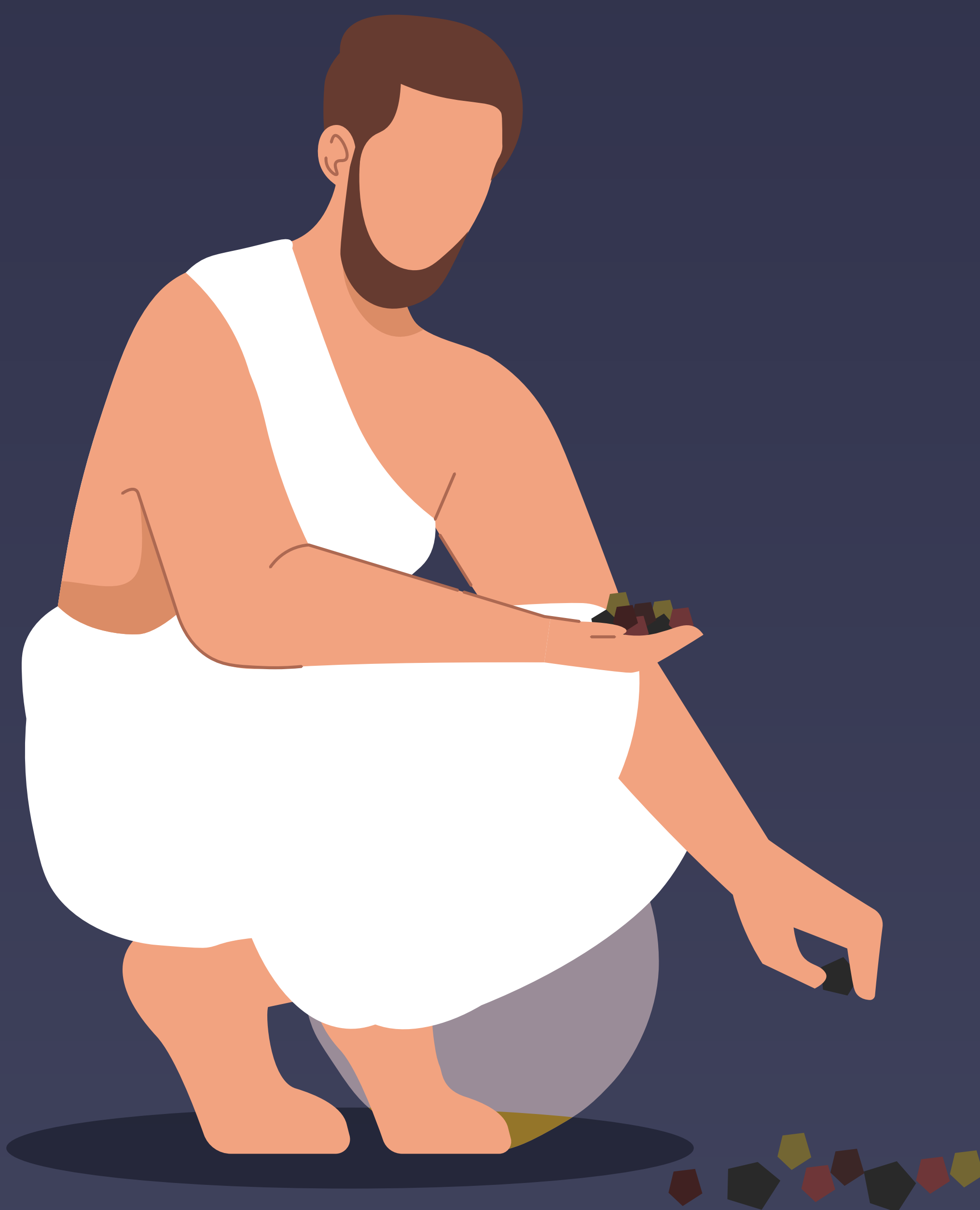


It is prescribed for the pilgrim to pick up 7 pebbles before leaving Muzdalifah, which he will throw at the Jamrah of 'Aqabah on the day of Eid. But if he collects them in Mina or any other place, then that is also permissible.



It is not good to pick up the pebbles for the rest of the days from Muzdalifah, so as not to burden the pilgrim, in addition to the fact that this is not prescribed. Pebbles for the rest of the days should be picked up in Mina or from anywhere else on the way.

It is not prescribed for him to wash the pebbles and apply perfume on them.



A description of the pebbles used for throwing

They should be small pebbles.

Smaller than hazelnuts, close to the size of
peas or date kernels.

Approximately 1 cm in length, more or less.

One should not use large pebbles.

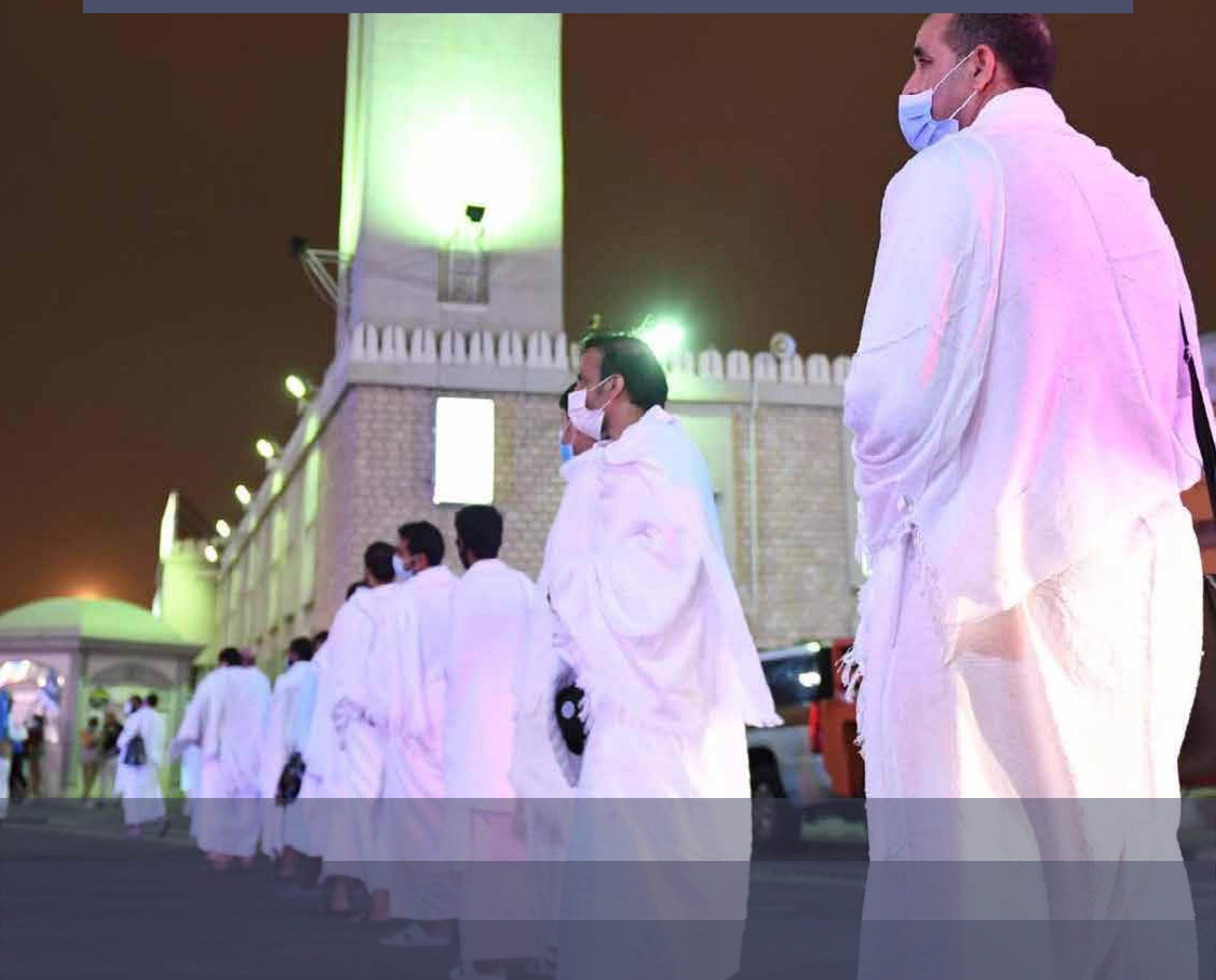


Do not waste too much time with choosing the shape of the pebbles and matching its size.

After he had collected the stones in his hand, the Prophet ﷺ said:” **Throw stones like these and beware of exaggeration in religion, for those who came before you were destroyed by exaggeration in religion.**”



How do I know my location in Muzdalifah?



You should stay within the location and the camp of your own group and not leave unless necessary.



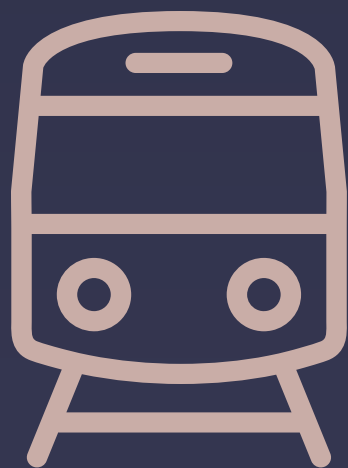




Save your location via GPS services on your phone such as Google Maps.

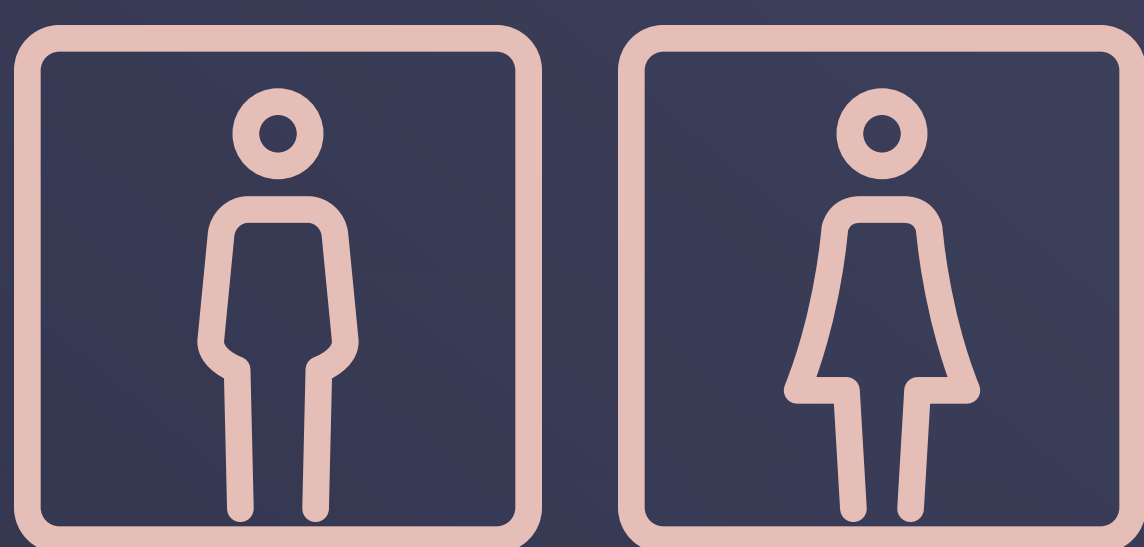


Clearly identify the most important nearby landmark and make sure you have someone to accompany you.

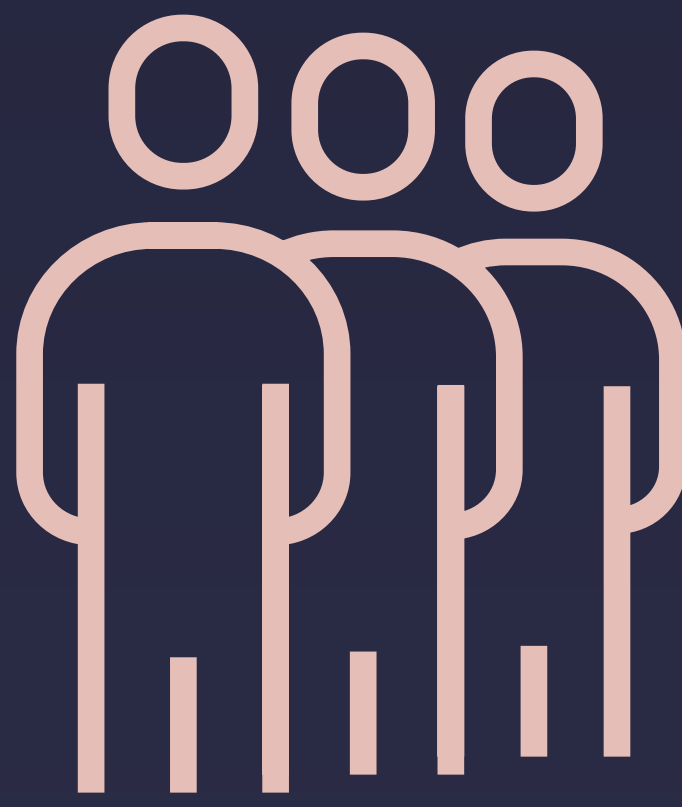


Buses, roads and stations look similar, so make sure to stay with your group and do not venture outside alone. Get to know the supervisor of the bus or the group to ask his permission and consult him in everything you need.

Toilets



Toilets can be located on all sides of **Muzdalifah**, and next to your place of arrival you will find a complex of toilets and a place to perform ablution for men, and another for women.



Wait for your turn and do not skip the line by taking the turn of someone who needs to use the toilet facilities and arrived before you.



Make sure to leave the toilet clean for the next user and throw your trash in the designated places.



Do not irritate the pilgrims by littering their roads with rubbish, as this site is part of the Sanctuary that we have been commanded to purify. On top of that; the Muslim is required to be clean and pure in all his circumstances: ***«Truly Allah loveth those who turn unto Him, and loveth those who have a care for cleanness.»***



To find the closest toilets to your location, [click here](#).



Important numbers

911

For emergencies and security
services

937

Medical consultations and
inquiries

920002814

The call center of the Ministry of Hajj
and Umrah to answer inquiries from
pilgrims

1966

For inquiries about the Sacred Mosque
and the Prophet's Mosque



You can obtain the rest of guides by visiting the website of the Ministry of Hajj and Umrah (by clicking here).

In these guides, you will find all the instructions and directions that facilitate you to perform the Hajj rituals with ease and confidence.



Strategic partner



Partners in success



**May Allah accept
your deeds
and efforts**

**For more
information,
follow us on our
accounts
on social media**



Haj.gov.sa | @HajMinistry

وزارة الحج والعمرة
MINISTRY OF HAJJ AND UMRAH

